



# SeaSight HD Camera

**Crisp HD underwater video and new user-friendly SeaSight Control software designed to enhance feed monitoring and fish inspection.**

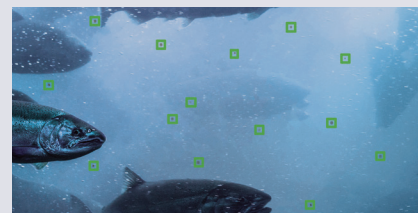
**Our camera technology has been significantly advanced with the development of this SeaSight HD Camera. Allow yourself to take greater control over the monitoring of feeding and fish activity with crystal clear high definition video imagery and visually intuitive SeaSight Control software.**

## Key Features

- **High Definition Video** "Colour and Monochrome" or "Monochrome Only" cameras are available with optical setup tuned for optimum image and feed pellet identification.
- **Lens Cleaning Brush** removes any build-up of fouling or cleaner fish on the lens without having to pull up the camera each time it needs to be cleaned.
- **Vision in low light** Our colour cameras move into Infrared Mode (mono) at very low light levels.
- **Oxygen and Depth Sensors** Optional on-board optical dissolved oxygen sensor can be mounted under the field-removable support plate. Onboard depth sensor provides depths accurate to 0.1m.
- **Data Overlay** Data from all connected sensors is overlaid onto the video image.
- **Data Logging** Temperature, oxygen and depth can be recorded against time for analysis with SeaSight Data Logger.

## SeaFeed Pellet Detection

As an option, SeaFeed Pellet Detection can be included - using clear video imagery from SeaSight HD Camera and sophisticated detection algorithms to intelligently pinpoint feed pellets. Full system integration capability with SeaFeed Feed System provides automatic control of feeding, or if preferred, detection in manual mode as a visual aid with user defined "threshold" triggers within SeaSight Control.



- Full HD video quality
- Continuous pan and tilt function offers 360° movement

- Lens cleaning brush

- Visibility in very low level light with infrared mode

- Onboard depth sensor and optional oxygen sensor

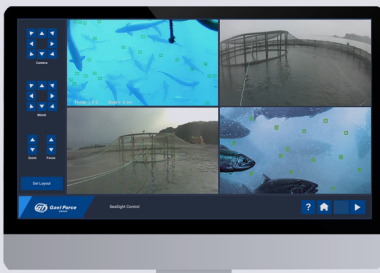


- Robust outer casing

**Specifications**

Video system	IP
Resolution	1080p
Total pixels	1920 x 1080
Pan / Tilt	360° / 360°
Weight	11.5kg
Depth rating	110 metres
Power supply	24 V dc
Oxygen temperature sensor	7020 (optional)
Depth sensor range / accuracy	50m / 0.1m

**SeaSight Range**

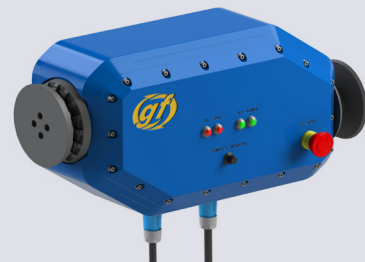


**SeaSight Control**

SeaSight Control is our new software offering with a clean visual appearance which is easy on the eye and makes navigation intuitive. Camera windows are completely scalable and can be user-defined, and zoom, focus and multi-directional control on both the camera and winch is standard. Most significant of all, Pellet Detection can now be fully integrated, as an option, into SeaSight Control, providing the operator even more data to make informed decisions.

**SeaSight Double Winch**

SeaSight Double Winch allows you to effortlessly move the camera horizontally and vertically offering increased control over its positioning throughout the pen, which is particularly of benefit in high energy conditions. Completely controllable via SeaSight Control Software or at the pen itself.



**SeaSight HD Fixed Look Up/Down Camera**

Our fixed underwater camera offers full HD quality video and can be used in either 'look-up' position to monitor feeding activity or 'look down' for the purpose of monitoring morts at the bottom of the pen. Infrared mode provides vision in very low light conditions and its compact, rugged design is a perfect fit for low cost installations.